



THE ENGINEAIRE

MONTHLY NEWSLETTER



EVENTS

Congratulations to our chapter on a successful Fall Golf Tournament!

You can see the photos on our Facebook page or by [clicking here](#).

NOVEMBER 8, 2023

IN THIS ISSUE:

- EVENTS
- MT. RUSHMORE OF AR ASHRAE
- SOCIAL MEDIA
- NEXT MEETING

NEXT MEETING:
DECEMBER 6, 2023



ASHRAE HISTORY

When Gutzon Borglum, the artist behind Mt. Rushmore, conceived his idea for the gigantic sculpture, he imagined the artwork as a continuum of time marking the important events in the history of the United States. Borglum wanted to represent the birth, growth, development, and preservation of the United States as represented by the presidents who achieved these monumental stages of American history.

George Washington represented the birth of the United States. Thomas Jefferson symbolized the growth of the US. Theodore Roosevelt stood for the development, and Abraham Lincoln represented the preservation of the United States. As an historic record, this was a highly effective method of representing the historical cycle of the United States. Using this effective model, what then is the Mt. Rushmore of Arkansas ASHRAE – the leaders of the historical cycle of Arkansas ASHRAE?



THE ENGINEAIRE

MONTHLY NEWSLETTER



NOVEMBER 8, 2023

IN THIS ISSUE:

- EVENTS
- MT. RUSHMORE OF AR ASHRAE
- SOCIAL MEDIA
- NEXT MEETING

NEXT MEETING :
DECEMBER 6, 2023



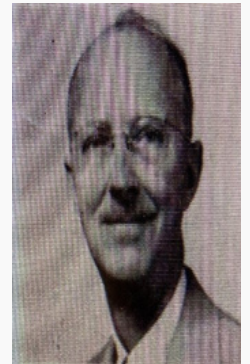
ASHRAE HISTORY

Birth. Arkansas ASHRAE's George Washington was Ernest Pettit, also a military man. (Ernest Pettit served in World War I before initiating his engineering career.) Mr. Pettit was the driving leadership force behind the birth of what became Arkansas ASHRAE on January 27, 1952. (At that time in the early 50's the organization was called ASHVE.) And as George Washington, Ernest Pettit not only led the convention process that established the new entity, Pettit also served as the first President of the created entity.



BILL GOODMAN

Growth. As Thomas Jefferson doubled the size of the United States with the Louisiana Purchase in 1803, Bill Goodman expanded Arkansas ASHRAE by nurturing the establishment of the Northwest Section of Arkansas ASHRAE (established in December 1991). Later, the Northwest Section would become its own full-fledged chapter.



ERNEST PETTIT



THE ENGINEAIRE

MONTHLY NEWSLETTER



ASHRAE HISTORY

NOVEMBER 8, 2023

IN THIS ISSUE:

- EVENTS
- MT. RUSHMORE OF AR ASHRAE
- SOCIAL MEDIA
- NEXT MEETING

Development. As Teddy Roosevelt paved the way for the United States to develop into the top industrial country in the world, Jim Monk was the leading light of the transfiguration of Arkansas ASHAE into the multi-faceted social organization that it is today. Being the leader behind the transformative Octoberfest celebrations and the golf socials of the mid-1990's, Jim Monk led the diversification of Arkansas ASHRAE from a strictly suit-and-tie social atmosphere into a more fully formed and networked social organization that mushroomed into bowling tournaments, trap shooting, cook outs, poker tournaments, cornhole contests, and many other exciting social events.



JIM MONK

NEXT MEETING :
DECEMBER 6, 2023



THE ENGINEAIRE

MONTHLY NEWSLETTER



ASHRAE HISTORY

Preservation. As Abraham Lincoln is credited with the existential preservation of the United States as a country, leading it through the volatile Civil War years, Bill Harrison led not only Arkansas ASHRAE, but National ASHRAE into a heightened green building movement that seeks a vital contribution to the preservation of our environment and planet. Mr. Harrison's contribution to the green building movement within ASHRAE, as evidenced in the green transformation of ASHRAE-headquarter design and his Maintain to Sustain ASHRAE Presidential theme, contributed immensely to the overall greening of the ASHRAE brand not only in the United States but across the globe.



BILL HARRISON

NOVEMBER 8, 2023

IN THIS ISSUE:

- **EVENTS**
- **MT. RUSHMORE OF AR ASHRAE**
- **SOCIAL MEDIA**
- **NEXT MEETING**

NEXT MEETING :
DECEMBER 6, 2023



THE ENGINEAIRE

MONTHLY NEWSLETTER



ASHRAE HISTORY

NOVEMBER 8, 2023

IN THIS ISSUE:

- EVENTS
- MT. RUSHMORE OF AR ASHRAE
- SOCIAL MEDIA
- NEXT MEETING



THE ARKANSAS ASHRAE MT. RUSHMORE: (LEFT TO RIGHT) ERNEST PETTIT, BILL GOODMAN, JIM MONK, BILL HARRISON

NEXT MEETING :
DECEMBER 6, 2023

[**arkansasashrae.starchapter.com**](http://arkansasashrae.starchapter.com)



THE ENGINEAIRE

MONTHLY NEWSLETTER



NOVEMBER 8, 2023

IN THIS ISSUE:

- EVENTS
- MT. RUSHMORE OF AR ASHRAE
- SOCIAL MEDIA
- NEXT MEETING

NEXT MEETING :
DECEMBER 6, 2023



SOCIAL MEDIA

Did you know our chapter has a **Facebook**? We are working on keeping it updated with meeting information, event details, new members and much more. If you don't follow us you can find us by searching: **ASHRAE Arkansas**. Follow us, like our post and keep an eye out for some ASHRAE swag giveaways!



NEXT MEETING

Mark it on your calendar. Our next meeting is December 6, 2023 at the Red and Blue Event Venue starting at 11:30 a.m. We want to challenge everyone to bring one new person OR one member who maybe hasn't been to a meeting in a few years